



The *Great* Canadian Catholic Hospital History Project

Documenting the legacy and contribution of the
Congregations of Religious Women in Canada,
their mission in health care, and the founding and operation of Catholic hospitals.



Projet de la *Grande* Histoire des hôpitaux catholiques au Canada

Retracer l'héritage et la contribution des
congrégations de religieuses au Canada,
leur mission en matière de soins de santé ainsi que la fondation et l'exploitation des hôpitaux catholiques.

St. Joseph's Hospital, Victoria 1875-1929

Source: Archives of the Sisters of St. Ann

Copyright: Public Domain

Digitized: November 2011

St. Joseph's Hospital



Victoria, British Columbia
1875 - 1929

St. Joseph's Hospital



1875

ESTABLISHED IN VICTORIA, BRITISH COLUMBIA
BY THE SISTERS OF ST. ANN

1929

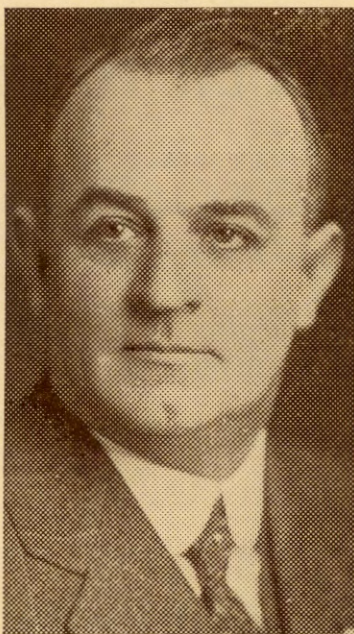
COMMEMORATING THE OPENING OF
THE NEW SURGICAL AND
MATERNITY UNIT

St. Joseph's

S tately home of healing art,
T hine the power to soothe the heart !

J oy and sorrow, woe and care—
O thers' burdens form thy share :
S acred spot where sad-eyed Grief
E ver seeks and finds relief :
P rayer and labor mark thy days,
H eaven's smile thy toil repays :
S weetest song of thanks we raise !





C. ELWOOD WATKINS

M. R. A. I. C.

The Architect who executed the plans of St. Joseph's Hospital in its two great expansions, 1908 and 1928, is a native son, born in Victoria

In 1910 he severed connection with the firm of Hooper & Watkins, of which he had been the junior partner, establishing himself in independent business. Among his numerous construction activities, which include many private residences, are the Victoria High School, St. Joseph's two extensions, and, at the present time, the Nurses' Residence for both St. Joseph's and the Jubilee Hospitals

A dream of years has come true
in this \$400,000.00 extension to
St. Joseph's Hospital, and it is with
pride that we turn it over to its
proprietors, the Sisters of St. Ann

□

Luney Brothers, Limited

General Contractors

GILLESPIE, HART & TODD

LIMITED

VANCOUVER AND VICTORIA

*Investment Bankers, Mortgages
General Insurance, Real Estate*

611 FORT STREET
VICTORIA, B. C.



Rev. Sister Superior,
St. Joseph's Hospital,
Victoria, B. C.

We offer our congratulations
to the Sisters of St. Ann upon
the completion of their new
hospital wing. It stands as a
monument to notable achieve-
ment in the past and we wish them
continued success in the future.

GILLESPIE, HART
& TODD, LIMITED

JOHN HART

Our Congratulations



We are glad to add our
name to the hundreds of
others in congratulating
the Sisters of St. Ann
upon the completion of
this wonderful building



**Bishop & Worthington
Limited**

576 Yates St. P. O. Box 81

General Agents for

Union Assurance Society, Limited
of London, England

We congratulate
St. Joseph's Hospital on
completion of splendid
building and wish the
community continued
success



Otis - Fensom
Elevator Co., Ltd.

C. L. McDONALD - *Vancouver District Manager*

WE share the pride of ST.
JOSEPH'S HOSPITAL, of
Victoria in their completely
equipped X-Ray Department,
the facilities of which are the
best that research and manu-
facturing skill provide. This
is another instance where the
management has selected equip-
ment based on quality and
efficiency rather than price, in
fairness to a capable department
personnel, and with a view to
rendering the utmost in
service to patients

□

Victor
X-Ray Corporation
of Canada, Ltd.

Vancouver Branch - 570 Dunsmuir St.



ST. JOSEPH'S HOSPITAL IN 1908

*For the past 71 years
the Sisters of St. Ann have also
been conducting a Residential
and Day School in Victoria,
where thousands have bene-
fited and thousands more
will benefit by a truly
Christian education*



St. Ann's Academy



Government House,
May 23, 1929.

Dear Sister Superior:—

The approaching completion of the magnificent new wing of St. Joseph's Hospital seems a fitting time to tender to you and your associates the heartiest congratulations, not only of myself, but of the people of British Columbia upon this further great effort.

You are making history. This new wing constitutes a fitting memorial to the half-century of unwearyed effort on the part of your predecessors, yourself, and your staff in the cause of the sick and the suffering.

I wish you Godspeed in your noble work.

R. RANDOLPH BRUCE,
Lieutenant-Governor.

*The Reverend Sister Superior,
St. Joseph's Hospital,
Victoria, B. C.*

A Page of History

THE beginning of any great endeavor seems always to call forth the best efforts of truly great souls, so the founding of St. Joseph's Hospital had, as its imperishable "living stones", three of the bravest and noblest of Victoria's pioneers, Bishop Demers, Hon. Dr. John S. Helmcken, and Sister Mary Providence, whose sterling work for this community in its first and all-important days, has yet to be, if ever it will be, fully chronicled.

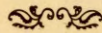
No great achievement is accomplished without its having been first "a vision and a poet's dream". St. Joseph's Hospital, the dream of Bishop Demers, was taking shape in these far-seeing and benevolent minds, while the Sisters of St. Ann—in addition to their teaching duties and the care of orphans—were, with the active approval of Mother Mary Providence, and the encouragement and valiant support of Dr. Helmcken during six long years, quietly visiting and caring for the sick. It was Bishop Seghers, however, who embodied their ideal in concrete form, and on August 21, 1875, the cornerstone for the first hospital was laid by Dr. Helmcken, and the Sisters of St. Ann who, having been urged to undertake this work, pledged themselves to do so. Completed according to the plans of the architect, J. Symes, at a cost of \$13,800, it was formally opened on June 25, 1876, and in the fifty-three years which have followed, the doors of St. Joseph's have never been closed day or night, upon suffering humanity.

Rapid expansion necessarily followed in order to keep pace with its wide activities, and in June, 1888, the second building planned by architect J. Teague, and costing \$33,000, was erected. Again, in 1897, a third addition was required at a cost of \$38,500, and in 1900, a School of Nursing was opened from which there have been over three hundred graduated to date. In 1908 the Humboldt Annex was completed, planned by Hooper and Watkins, at a cost of \$135,000. The Ladies' Auxiliary, growing out of a little group of devoted friends of St. Joseph's Hospital, was formed in 1920, and the Alumnae Association in the same year. The assistance of both these organizations has never been failing and their support has always been loyal. On November 23, 1927, the Surgical and Maternity Unit was begun, by architect C. Elwood Watkins, at a cost of \$365,000, and on March 18, 1928, the cornerstone was laid by the Right Rev. Thomas O'Donnell, eighth Bishop of Victoria, who used in the

ceremony the same silver trowel with which Dr. Helmcken had laid the first cornerstone in 1875, and which has been presented to St. Ann's Museum by Mrs. W. Higgins, daughter of "the Old Doctor". At the ceremony of last March, the Superior-General of the Order of St. Ann was present, having journeyed from the Mother House at Lachine, especially for this purpose and to lend her approval to the great enterprise growing out of the humble beginnings, when two of the pioneer Sisters, Sister Mary Jean and Sister Mary Winifred, had sacrificed their lives in the care of the sick.

More and more apparent has the wisdom of the selection of the hospital site become. Central location has sacrificed nothing to beauty of outlook, and the quiet surroundings so rarely found in the present-day, noisy world. The Annex for the treatment of tubercular patients or suspects, is set in a delightful old-world garden and is one of the lovely homes of Victoria's early families. Under the title "Vernon Villa", preserving the historic name of its owners, with whom the Sisters enjoyed most pleasant relations, it has been remodelled to give all the sunshine and fresh air and freedom from anxiety which are so necessary in the treatment of its patients. In the short time of its existence, many have gone forth from its friendly portals, renewed for the battle of life, through the excellent care given at the proper time.

The little world of St. Joseph's Hospital cherishes one historic figure which is unique in the annals of the Order: there still dwells in the midst of its modern day activities, Sister Mary Bridget, who celebrated her Diamond Jubilee in 1924, and who is today as deeply interested in the new building as she was in the foundation of the old, of which, in 1876, she became first Superior. Her cheery optimism and faith in the goodness of God, makes of her a tower of strength to her latest successor, upon whom the arduous duties entailed in the management and enlargement of a fully modern hospital devolve.



A Tribute

St. Joseph's Hospital looks back upon the years in grateful appreciation of the services rendered by the Ladies' Auxiliary and the Alumnae Organization, which have so efficiently co-operated with them in their efforts for the preservation and restoration of health—life's greatest asset.

Description of New Wing

THE Cornerstone of the new wing, which makes a handsome addition to St. Joseph's, was laid on March 18, 1928. This new structure, the cost of which is in the neighborhood of \$400,000.00, is erected to the east of the main building in an L-shaped formation. The exterior conforms to the same style of structure as the Humboldt Annex: the building is reinforced concrete and is thoroughly fireproof throughout.

On the ground floor, the new wing includes Sisters' living quarters and dining-rooms for the Nurses. The main floor is given over to the X-Ray Department, the children's wards and several private rooms. The X-Ray Department is the last word in its line and occupies several rooms on this floor: a new Deep Therapy machine has been installed, and the treatment room in connection with same has been completely lined (walls and ceiling) with $\frac{1}{8}$ " of lead, thereby insuring all operators and patients from the danger of burns and similar accidents incident to this work. The Cystoscopy room contains a Braasch-Bumpus Urological and Cystoscopic Radiographic Table with a Victor Bucky Diaphragm. The Department is under the direction of a Medical Radiologist, two Sister registered Technicians and two pupil Technicians. The new equipment installed in this department represents an expenditure of \$10,000, bringing the value of the entire equipment to some \$20,000.

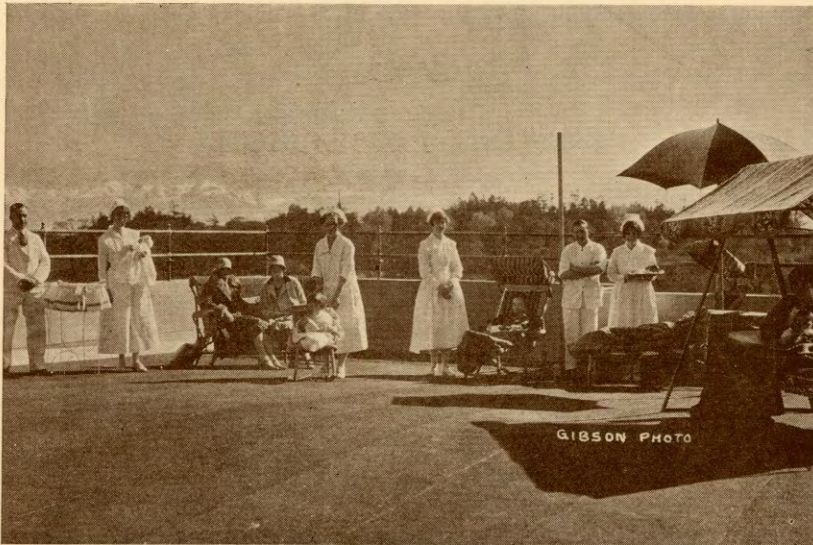
The third floor is devoted exclusively to private patients in private and semi-private rooms, bathrooms and utility rooms. On the fourth floor is located the Maternity Department with an entirely new surgical equipment. Facing the south are two nurseries, with special bathroom attached, and an open sun-porch for the infants.

On the fifth floor are seven operating rooms, including two for major operations, one for dental, one for fracture work, one for eye, ear, nose and throat, and two for minor operations. The walls throughout are apple-green tile and the floors pearl grey tile. The major rooms have the very latest in lighting: two scialytic lamps give a clear, steady, strong light to the surgeons. On this floor are also located the Doctors' rooms, with shower baths, consulting rooms and the Nurses' rest room.

Everywhere attention has been given to the development of the greatest use from sun, light, air and heat.

The elevator is one of the latest achievements of the Otis-Fensom Elevator Company, and was installed under the direction of Mr. C. L. McDonald, of Vancouver. It is a full-automatic, microlevelling car, with a floating platform and is equipped with every possible safety device, insuring the Hospital against those accidents possible on the older type of elevator.

The forward section of the wing ends in a solarium on each floor, where convalescent patients may enjoy the sun and the splendid view. One of these sunrooms has, through the kindness of Mrs. R. P. Butchart, been fitted out with Vita Glass windows.



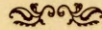
THE SUN DECK

Atop the new wing is a great stretch of sun deck, with an uninterrupted view of the sea and the snow-capped Olympics in the distance. Here the patients who can be placed in wheelchairs are free to spend as much time as they care, even to the extent of having their mid-day meal served there. Everything is being done to make this a much-enjoyed section of the house.

In the plans for this new wing, stress was laid on the necessity of having the building one of great fire-resistance, and with this in view, it has been equipped with the latest aids and special apparatus that could be procured.

The electrical equipment is of a very high order. A transformer room is located in the basement: high tension current is brought to it from the B. C. Electric, underground, and is there transformed and distributed. The Silent Call System, reducing by a very large percent the noise identified with the bell system, has been installed. Red pilot lights are located over the various doors, and the corresponding light registers on the annunciator. Other lights for the staff are of a different color. The Hospital feels that this system will add greatly to the quiet and rest of the patients.

In all, the new wing will increase the bed capacity by 100 beds: including the new rooms and those vacated by departments having to operate formerly in private rooms in the old section.



Further Expansion

The construction of a new Nurses' Home to accommodate 110 nurses has been undertaken by Messrs. Luney Brothers, Limited, and the work was begun on April 26.

The building is being erected at the corner of Collinson and Rupert Streets, and will cost a little over \$100,000.00. It will conform in design with the architecture of the new wing, and Mr. C. E. Watkins is the architect.

The plumbing and heating will be carried out by Mr. Walter Pridham, the heat to be supplied by the central power unit built in connection with the new wing.

The building will be three stories high, and will include a large and well-lighted basement, which is in the nature of a "lower ground floor," and will provide demonstration rooms, class rooms and a private laundry for the use of the nurses.

The main floor will comprise a living room, library and a large hall measuring 62 x 37 feet. The two upper floors will be given over to double bedrooms, and on each of these floors there will be a study or reading room for the nurses.

When completed, the Nurses' Home will be a real haven of rest, sufficiently far removed from the Hospital to enable the nurses to be right out of the work and relax. The plans call for occupancy on or about September 15.

Remodelling of Old Building

POWER PLANT—*Refrigeration*

As a necessary result of increased capacity, St. Joseph's has had to have its main kitchen enlarged and remodelled, the cost of which does not figure in the new wing estimate. At an additional cost of \$27,000.00, the former kitchen has been completely remodelled and a gas-range and a steam cooking system installed. All the baking is done in electric ovens, and a special electrical fan motor will draw off all the heat and steam. One section of the kitchen is given over to refrigerators, installed by the Linde Refrigeration Company. An ice-making plant in the power-house turns out half a ton of ice daily, besides cooling the three large refrigerators in the kitchen. From the kitchen, an Otis-Fensom service elevator brings the food (cooked) in conveyors to the floors, where it is transferred to steam tables in the diet kitchens.

At a distance of about 300 feet from the Hospital is the central heating unit. The Power House, built at a cost of \$49,000.00, has two complete new 150-H.P., returning, tubular boilers, with oil-burning equipment. The new wing is heated throughout by vapour, while a special engine in the power house operates the adjacent laundry. Several Manny heaters installed in the Humboldt Annex take care of the heating in the old section, and they have also been installed for heating the domestic water supply.

OFFICE REARRANGEMENT

With the Children's Ward transferred to the new wing, this space will in future be occupied by the Enquiry, Record Room and Main Office: the work of all three bears such a close relation one to the other that the larger quarters will enable the staff to handle the increasing work with more convenience and efficiency. A new switchboard, carrying an additional number of outside and local lines, has been installed with a view to giving better service.

With everything of the latest in equipment and scientific apparatus in the new wing, and the remodelling of so much of the old, St. Joseph's is now prepared to meet all the demands made upon it by the Medical Profession of Victoria and surroundings. It is hopeful of the support of the people in order that the tremendous debt it has incurred at a high rate of interest may some day be liquidated: it assures this public in return the spending of its personnel in the best possible care of its sick, adding to this always the personal touch of lives consecrated to this work.

The Hospital at Night

WHEN twilight comes to Victoria, St. Joseph's Hospital settles down for the night, and what a contrast is presented in the hospital atmosphere: the daytime bristling activity with its busy persons hurrying here and there, Doctors about visiting their patients, Operating Room personnel at high tension—all this fades out as the dimming of the lights and a bell signal announce to the evening visitors that night has come. Then busy little nurses call round to each patient to freshen them up in order to induce sleep, a subdued but cheery "goodnight" is exchanged, lights out, and all is quiet—night has come, bringing with it peace and forgetfulness to many. Throughout these long hours, softly-treading nurses move about, caring for and watching all and especially those putting up a bold fight for a return to health. The Sister on night supervision visits each room to see that all is well: she is really busy about many things, admission of patients, placing them, some are operative, some maternity, and, with that patient near whom the Angel of Death is hovering, she lingers, to strengthen him in the last combat. Presently the telephone operator signals for the Sister, a rush operative case is on its way in. In less time than it takes to relate it, the Sister in charge of the Operating Room and her staff are in readiness so that not even the slightest delay should handicap the surgeon.

The location of St. Joseph's particularly adapts itself to a hospital-zone: although within five minutes' walk from tram line and docks, it is singularly secluded.

Inside the Hospital, in addition to the natural quiet that comes with the end of the day, a system of silent calls has been introduced: other silencing devices are the double-hinged doors, soft, springy, battleship linoleum in the corridors, diet kitchens away from the room quarters and a quietly-operated elevator.

St. Joseph's has endeavored to solve every possible difficulty in the way of noise-reduction, so that day and night the patients may enjoy all the quiet and rest so conducive to recovery.

Night lights replace the ceiling lights in corridors, giving sufficient illumination for the tread of busy, noiseless feet, yet not disturbing patients by undue reflection.

Board of Management

President—MOTHER MARY GABRIEL, Provincial Superior

Chairman—SISTER MARY MILDRED, Superintendent

Secretary—C. H. O'HALLORAN

MR. E. D. JOHNSON MR. J. L. MARA MR. C. E. WILSON

MR. ALEX. McDERMOTT MR. W. S. FRASER

Advisory Board

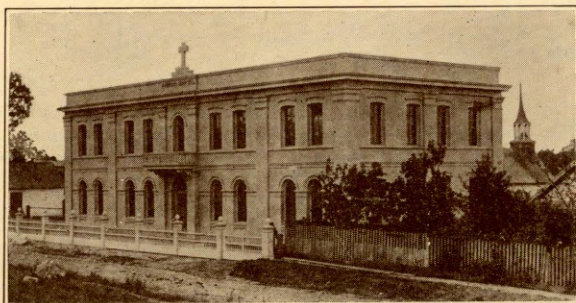
DR. W. T. BARRETT

DR. GEO. HALL

DR. F. M. BRYANT

Consulting Staff

<i>Medicine</i>	- - - - -	DR. J. H. TAYLOR
		DR. J. W. LENNOX
		DR. STUART KENNING
<i>General Surgery</i>	- - - - -	DR. H. ROBERTSON
		DR. T. McPHERSON
		DR. GORDON C. KENNING
<i>Gastro-Enterology</i>	- - - - -	DR. F. M. BRYANT
		DR. GEO. HALL
<i>Genito-Urinary</i>	- - - - -	DR. ALLAN FRASER
<i>Gynaecology</i>	- - - - -	DR. W. T. BARRETT
		DR. H. E. RIDEWOOD
<i>Obstetrics</i>	- - - - -	DR. A. E. McMICKING
		DR. J. M. FOWLER
<i>Pediatrics</i>	- - - - -	DR. R. L. MILLER
		DR. G. F. AYLWARD
<i>Pathology</i>	- - - - -	DR. J. H. MOORE
<i>Radiology</i>	- - - - -	DR. H. RUNDLE NELSON
<i>Ophthalmology, Rhinology,</i>		
<i>Oto Laryngology</i>	- - - - -	DR. M. J. KEYS
<i>Anaesthesia</i>	- - - - -	DR. G. F. AYLWARD



ORIGINAL ST. JOSEPH'S, 1875.

ST. JOSEPH'S HOSPITAL, VICTORIA, B. C.

Annual Report

December 31, 1928

Interne patients admitted during year	-	-	-	-	2,662
Interne patients discharged during year	-	-	-	-	2,622
Externe patients admitted during year	-	-	-	-	1,175
Patients remaining at end of year 1928	-	-	-	-	137
Number of days' treatment	-	-	-	-	46,855
Average days' stay in Hospital	-	-	-	-	16
Interne medical cases	-	-	-	-	999
Major surgical cases	-	-	-	-	345
Minor surgical cases	-	-	-	-	800
Births	-	-	-	-	263
Deaths—Institutional	-	-	-	-	117
—Within 48 hours	-	-	-	-	24
X-Ray examinations and treatments	-	-	-	-	4,742
Pathological laboratory examinations	-	-	-	-	12,092

REVENUE

Cash on hand, Jan. 1, 1928	-	-	\$	1,825.86
Provincial Government	-	-		28,578.95
Dominion Government	-	-		9,403.75
Municipalities other than City of Victoria	-	-		5,007.40
Patients' fees	-	-		109,902.53
Donations	-	-		2,115.81
				<u>\$156,834.30</u>

EXPENSES

Administration	-	-	-	-	\$	9,163.43
Professional care of patients	-	-	-	-		56,317.57
Stores, kitchen, etc.	-	-	-	-		61,379.85
Heating and lighting	-	-	-	-		10,476.67
Building and grounds	-	-	-	-		20,298.08
Laundry	-	-	-	-		8,621.38
Miscellaneous	-	-	-	-		3,846.07
						<u>\$170,103.05</u>
Debit balance	-	-	-	-		<u>13,268.75</u>

Expenditure on capital account for new construction to May 1, 1929, \$308,904.00.



The Heart of the Hospital

Here dwells the King of kings on altar throne,
'Neath dome of azure girded round with gold;
And here His faithful ones delight to come,
To make atonement for a world so cold.

The early morning hours behold them haste,
To find in sweet communion rapture deep;
To offer Him the precious new-born day,
And plead for strength its every grace to reap.

Throughout the long-drawn hours when burdens press,
When others wracked with pain, their presence claim,
On winged thought love wafts a message sweet
To praise in secret God's most Holy Name.

At evening, sweetest hour of all the day,
When toil and weariness in silence cease,
Like children at a loving Father's knee,
They claim His benediction and His peace.

And those who through the vigils of the night
Keep watch o'er restless ones in anguish deep,
Find strength and courage in His presence blest,
And crave for them His priceless gift of sleep.

Pulsating thus throughout the busy hours
Of each long day, through watches of the night,
Doth trustful heart in readiness respond
To God's sweet call where shines Love's vigil light.

Information of Interest to Housewives

Which is a tell-tale as to "where the money goes."

St. Joseph's : Daily, at *present* capacity :

Serves some 800 meals,
Uses 40 gallons of milk,
1 case of fresh-laid eggs,
90 pounds of meat,
30 pounds of butter,
85 loaves of bread,
Two and one-half bags of potatoes.

Chicken-dinner day—twice weekly—calls for 60 six-pound chickens.

Egg Custard Dessert calls for 100 eggs and 5 gallons of milk.

Eggs preserved in waterglass for kitchen consumption only, 1,800 dozens per year.

4,000 bottles of fruit are put up every year, in addition to the bought goods in this line.

Over a thousand sheets and some 1,500 pillow slips per week.

Fifty thousand yards of gauze per year.

In recognition of
the services rendered to this community
by the Sisters of St. Ann, and their
achievement as evidenced by the
completion of this new addition to
St. Joseph's Hospital, we are
pleased to extend
CONGRATULATIONS



*B. C. Electric Railway
Company*

We Congratulate the
Sisters of St. Joseph's
Hospital on the splen-
did addition to their
building *and* appreciate
having been associated
in the enterprise



A. R. Frewing

Kelly Douglas & Co. Ltd.

Take this opportunity of
wishing the Sisters of St.
Joseph's Hospital every
success in their latest
achievement in building
the new wing of the hos-
pital. Such a need has long
been felt and will be a great
and lasting benefit to all
those requiring constant
care and attention
when sick

□

Kelly Douglas & Co. Limited

*Manufacturers of Nabob Teas and Coffees
Spices, Extracts, Jelly Powders, Etc.*

Wm. N. O'Neil Co.
(Victoria) Limited



The TILING
TERRAZZO &
MARBLE WORK
FOR THIS HOSPITAL
WAS CARRIED OUT BY US

We also supplied

The Acme Light-proof Shutters
Steel Lavatory Partitions
Polished Wired Glass
Blackboards



HIGH GRADE
BUILDING MATERIALS

551 Yates St. - Victoria

Greetings!

To the Sisters of St. Joseph's Hospital
we extend congratulations upon the
wonderful work and progress which
for many years have served the City
of Victoria and surroundings



Walter Pridham
Plumbing and Heating Contractor

Established nearly a Century—1830-1929

The Stevens Companies

Toronto, Winnipeg, Calgary, Vancouver
London, England

Surgical Instruments - Sterilizers
Hospital Furniture - Sick-Room Supplies
First-Aid Equipment
Surgical Sundries



The B. C. Stevens

730 Richards St. Co., Ltd. Vancouver

Did you ever think or realize how
important *Electricity* is to
the modern hospital?

To provide for the Nurses' Silent Call System,
Lighting, Telephone, Bell, Power in the new
wing of St. Joseph's Hospital, it has taken nearly
6 miles of pipe, varying in size from $\frac{1}{2}$ -inch to $3\frac{1}{2}$
inches diameter; nearly *26 miles of wire*, from
1-32 of an inch to 1 inch diameter, and all of this
intricate system has been installed by—

Hawkins & Hayward
Electrical Contractors

1121 Douglas, cor. View, Victoria, B. C. Phone 643

Victoria Machinery
Depot Co., Limited

Engineers, Blacksmiths
Founders *and* Repairers

□ □

Phones: Office 570 Stores 589 Works 1690

343 Bay Street Victoria, B. C.

*To those who have made
this new hospital a reality,
we extend congratulations*



W. H. Wilkerson

"At the Sign of the Big Clock"

Watchmaker, Jeweller and Diamond Merchant

1210 Douglas St., Victoria, B. C.

The
**Hobart Manufacturing
Company**

Electric

Coffee Mills, Candy Machines,
Food Cutters, Meat Choppers,
Bone Grinders, Van Berkel Slicers,
Mixing Machines and Accessories.

Vancouver Office and Show Room, 508 Smythe St.
(between Seymour and Richards Street)

E. S. Chambers, *Sales Agent*

Phone Douglas 392

Congratulations !

To the Sisters of St. Ann, and the Governing Body of St. Joseph's Hospital, we extend greetings upon erection of this splendid new wing, which contains the last word in hospital equipment for providing the utmost comfort for the sick.

Imperial Oil Limited
Victoria, B. C.

W. A. Jameson Coffee Co.
Victoria, B.C.

IMPORTERS: SPECIALIZING in Coffee Roasting. Tea Blending, the Manufacture of Flavoring Extracts, "Vanart"—like Vanilla—only nicer! "Feather Light" Baking Powder, etc.

Associate Lines :

Spices, Cocoa, Lemonade Crystals and Persian Sherbert.



*The JAMESON Products are easily identified by their
Distinctive Trade Mark.*

A RECORD *of* SERVICE

Prompt with the world's latest news before breakfast, **THE COLONIST** has served Victoria and Vancouver Island unfailingly for over seventy years. Long in service but always abreast of the times.



The DAILY
COLONIST
VICTORIA, B. C.

ESTABLISHED 1858

Compliments
of
**BURNS &
CO., LIMITED**
VICTORIA, B. C.



MANUFACTURERS OF
The Famous
“Shamrock” Brands
*of Hams and Bacon,
Butter and Lard*

T. L. TOYE - RES. PHONE 3586X
P. EDMONDS - RES. PHONE 6192R



QUEEN'S MARKET

*Wholesale
and Retail*

MEAT
MERCHANTS

Phone

31

1327 GOVERNMENT ST.
VICTORIA, B. C.

With the compliments
and good wishes
of the
British America
Paint Company, Limited
Makers of
SATIN-GLO

We congratulate the
Sisters of St. Ann upon the completion
of the new Maternity and Surgical wing
of St. Joseph's Hospital and also upon
the splendid community service
which they have rendered to the
community since the establish-
ment of their Order in Victoria
many years ago

□

DIGGON'S LIMITED
1208-12 GOVERNMENT ST.

Compliments
of
Swift Canadian
Company, Limited
Victoria, B. C.

A. P. SLADE
(VICTORIA), LIMITED

Wholesale
FRUIT, PRODUCE
& VEGETABLE
MERCHANTS

DAVID SPENCER LIMITED

Established in Victoria in 1873

British Columbia's premier retail
mercantile organization

Now with stores in Vancouver,
New Westminster, Nanaimo and
Chilliwack—Stores consisting of
many Specialty Shops, a unique
achievement in department store
development

Victoria, B. C., May, 1929

We are proud to have had the
privilege of installing in new
St. Joseph's, the Hollow Metal
Partitions, Metal Blanket
Warmers, Saline Cabinets and
all Sheet Metal, Roofing and
Ventilation

□

Western
Steel Products, Ltd.
Victoria, B. C.

We have reserved this space to
offer our congratulations to
St. Joseph's Hospital on
the splendid addition
they have made to
their institution



McLennan, McFeeley
& Prior, Limited

Irish Linen Stores, Ltd.

1017-1019 Government Street Victoria, B. C.

Direct Importers of IRISH and SCOTCH LINENS

Fine assortment of

Ladies' Irish Linen Plain or Lace Handkerchiefs, Linen Towels
or Towelling, Plain or Embroidered Pillowslips, Linen Sheets or
Sheeting, Irish Linen Tablecloths and Napkins, Hand Woven
Tablecloths and Napkins, Hand Painted Tablecloths and Nap-
kins, Unbleached Linens, Lace Doilies and Runners.

Viyella and Clydella Flannels, Silk Bedspreads, Shirts, Cotton
Sheets and Sheetings, Turkish Towels, English Colored Tussora,
Velvet Cushion Tops and Cushions, Morcella Bedspreads, Scotch
All Wool Blankets and Down Comforters.

Agents for IRISH BELLEEK CHINA

Telephone 3576

A visit cordially invited

Simmons Steel Furniture Specially Built *for* Hospitals

Bedsteads
Bedsprings
Mattresses
Pillows

■ ■

Simmons Limited

Vancouver, B. C. Victoria, B. C.

British Columbia Cement Company, Limited

Belmont House
Victoria, B. C.

Manufacturers of

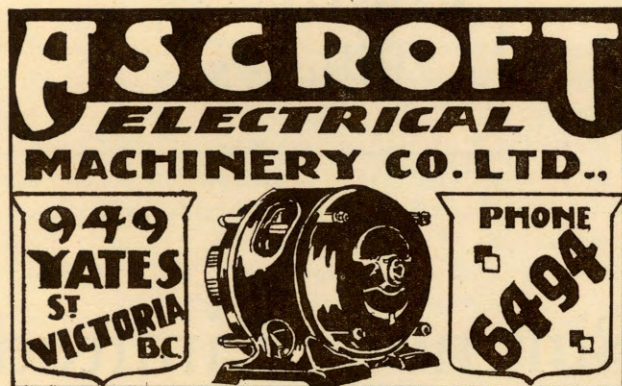
PORTLAND CEMENT

Used in the construction of
St. Joseph's Hospital

Plants at Tod Inlet and Bamberton, British Columbia
Capacity: 1,500,000 Barrels Yearly, which is three times
greater than the present consumption in British Columbia

CONCRETE ROADS surpass all others. They save public time
and public money; they are always safe to drive on and are
permanent investments. It pays to have the best

Electric Motors



With the Compliments
and Good Wishes

of

A. Macdonald &
Company Limited

Wholesale Grocers : : Victoria, B.C.

Plate Glass

*Interior and Exterior Painting
of St. Joseph's Hospital*

by

Mellor Brothers
Victoria, B.C. Limited

ANGUS CAMPBELL & COMPANY, LIMITED

1008-10 GOVERNMENT STREET
VICTORIA, B. C.

Smart Wearing Apparel
for WOMEN and CHILDREN

DIRECT IMPORTERS of
ENGLISH SPORTSWEAR

Appointed Selling Agents for
ENGLISH BURBERRY COATS and
DR. JAEGER'S WOOLLEN GOODS

New Dodge Brothers Six

Here is a new achievement in automobile design. A new car by Dodge Brothers—modern to the last minute, and possessing such features of style, beauty, comfort and performance ability, as to make it the greatest value in Dodge Brothers' history. — To view this car is to admire it. To drive it and to feel its abundant power is indeed a revelation. After you have examined this new car thoroughly, you will have a new standard by which to judge motor cars.

At new low prices *from* \$1495.00 *to* \$1830.00
at Victoria

Senior Six *from* \$2425.00 *up*.

A. E. Humphries Motors
Limited

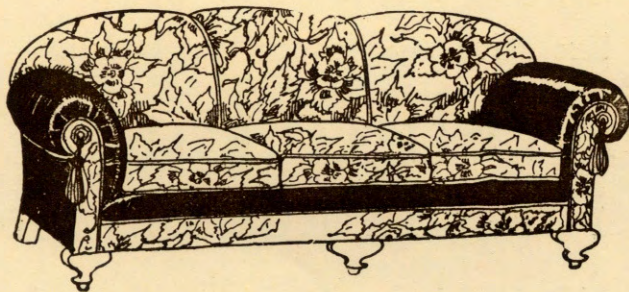
PHONE 479

925 YATES ST.

*It was our privilege
to furnish all Lumber used in
this beautiful building and
we are proud to have had
a part in its construction*



Lemon Gonnason
Company, Limited
Victoria, B. C.



Weiler Furniture Co., Ltd.

Home Furnishings exclusively
China, Glass, Silver, Cutlery, Etc.
Direct Importations mean *best value*
We invite you to visit our store. *You'll be interested*

S h o w r o o m s

Corner of Government and Broughton Streets, Victoria, B. C.

Use CLEAR SOL
and *Sterilize* with
confidence



Hygiene Products Limited
513 Hamilton Street, Vancouver, B. C.

Branches Throughout Canada

Exclusive Agents for the famous—

“White Line”
Hospital Equipment
Fisher & Burpe, Ltd.
X-Ray *and* Physiotherapy
Apparatus

Telephone Douglas 308
536 Smythe Street, Vancouver, B.C.

Head Office Winnipeg, Man.

Turner, Beeton & Company, Limited

Importers and Manufacturers

WHOLESALE

Dry Goods and Men's Furnishings

MANUFACTURERS OF

*The "Big Horn" Brand
Shirts, Pants and Overalls, Etc.*

ESTABLISHED OVER 50 YEARS

Victoria's Leading Drug Store QUALITY COUNTS

*We are headquarters for Nurses' Supplies including
Hypos, Scissors, Haemostats, Clinicals, etc.*

*Also Invalid Chairs, Trusses, Crutches,
and All Sick-Room Necessities.*

*We have dispensed over 410,000 new Prescriptions—a record
that speaks volumes for our correct, accurate dispensing*

□ □

THE OWL DRUG CO., LTD.

The Rexall Store -:- Kodak Agents

Phones: 135 and 2859 O

CAMPBELL BLDG.

W. H. BLAND, Manager

*We Congratulate You
on the recent addition to your hospital*



The W. H. Malkin Co. Ltd.

Tea Blenders

Coffee Roasters

FAIRBANKS SCALES
STANDARD THE WORLD OVER

SCALES

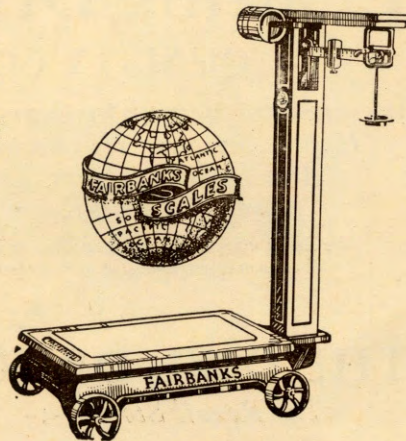
for Every Purpose

Health

Household

Commercial

Weighing



THE CANADIAN **FAIRBANKS-MORSE** COMPANY LIMITED
1400 BROAD STREET VICTORIA, B.C.

Plumbing Fixtures

of the latest design, manufactured in Canada and England, were installed in the St. Joseph's Hospital new wing by E. A. Colbert, Plumbing Contractor
Victoria, British Columbia

□

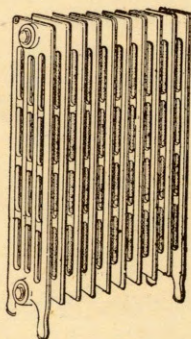
Andrew Sheret Limited

Wholesale Plumbing
and Heating Supplies

1114 Blanshard Street - - - - Victoria, B. C.

844 Cambie Street - - - - Vancouver, B. C.

When the BEST is necessary—
Gurney Equipment
is usually specified



In the new St. Joseph's Hospital wing no effort was spared to have the best of everything used in this construction. Gurney Copley radiation was chosen and installed by W. Pridham, Heating Engineer, Victoria, British Columbia.

Gurney

COMPLIMENTS *of*
**VIMPA
JERSEY MILK
LIMITED**

VICTORIA, B. C.

Manufacturers of
Palm Dairy Products
Milk - Cream - Ice Cream - Butter

*Refrigeration
is vitally important in the
care of the sick*

When life frequently hangs in the balance, foodstuffs
must be kept ESPECIALLY in good condition.

St. Joseph's realized the importance of good,
reliable refrigeration and selected the Linde
Canadian Refrigeration System as its
guardian and protector of health

□

The Linde Canadian Refrigeration System

VANCOUVER

Congratulations
to St. Joseph's Hospital
on the strides of progress
made, which keep pace with the
growing City of Victoria.

D. G. Brison
Manufacturers' Agent
Vancouver, B. C.



A pleasant place to Shop

Where you can buy the most dependable
merchandise at the lowest prices

Hudson's Bay Company.

INCORPORATED 2ND MAY 1670.

Victoria Daily Times

Gault Brothers, Ltd.
Vancouver, B. C.

The Premier Wholesale
Drygoods House in the
West for

Sheets - Blankets - Bedding
and other Hospital Supplies

The new wing of
St. Joseph's Hospital speaks
volumes for its spirit
of progress

E. A. Colbert
Sanitary Engineer

RAECOLITH FLOORING

laid in Corridors, Kitchens, etc.,
of St. Joseph's Hospital
by

**B. C. Magnesite
Flooring Co.**
R. ANGUS, Agent

*Congratulations
to St. Joseph's Hospital
on this new
achievement*

Ormond's Ltd.
Victoria &
Vancouver

A. M. Leeming

E. M. Thornton

Victoria Floral Co. Limited

Artistic Floral Arrangements
for every occasion. Seeds,
Plants, Trees, Shrubs, Bulbs
Phone 18 Night Phone 3858 L

1211 Douglas St., Victoria, B.C.

*The Tea & Coffee Services
for the new Hospital were
made in Victoria*

by

W. M. Carmichael
Mfg. Silversmith
610 Fort Street

"Say It With Flowers"

Brown's Victoria Nurseries, Ltd.

Leading Florists
and Seedsmen

Members F. T. D. Ass'n

618 View St. Phones 1269, 219

