



Catholic Hospital Digital History Book Collection

Documenting the legacy and contribution of the
Congregations of Religious Women in Canada,
their mission in health care, and the founding and operation of Catholic hospitals.



Livres numérisés sur l'histoire des hôpitaux catholiques

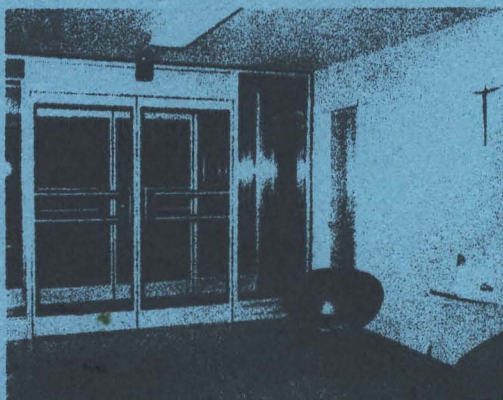
Retracer l'héritage et la contribution des
congrégations de religieuses au Canada,
leur mission en matière de soins de santé ainsi que la fondation et l'exploitation des hôpitaux catholiques.

Mattawa General Hospital Hôpital Général, Mattawa

Report 1967

Source: Mattawa Hospital
Copyright: Public Domain
Digitized: September 2021

Mattawa General Hospital



Entrée - Main Foyer

Hôpital Général, Mattawa

Hôpital General Hospital

The following statistics for the 1967 operation of the Mattawa General Hospital are interesting but become more interesting when compared with statistics and statements of service in the old hospital before the fire. For this purpose we have selected an average month in 1965 to compare with the corresponding month in 1967. Although it is customary to make this comparison on a yearly basis, we have not yet had a complete year in the new hospital and we are most anxious to report on the progress of the Mattawa General Hospital now that our books have finally been audited for 1967.

Keeping in mind that there were 44 beds in the old hospital and 33 beds in the new:

72 patients were admitted in November 1965 and they occupied beds for a total of 1024 days
104 patients were admitted in November 1967 and they occupied beds for a total of 913 days

This increase in admissions and decrease in days shows an overall improvement in patient care, reducing their average stay in hospital from 14 to 9 days. This improvement is due to many factors evident in the monthly financial statements:

November 1965		November 1967	
Nursing Staff, wages	\$6111.68	Nursing Staff wages	\$8958.00
Drugs administered	\$1090.47	Drugs administered	\$2057.69
Laboratory units	\$ 1703		2964
X-Ray films	341		583

Wages increased 8% from 1965 to 1967 but additional nursing staff has been employed and better utilized in our new hospital with a central nursing station. All nurses are available to all patients rather than being distributed through three floors as in the old hospital.

The cost of medication has been doubled showing an advance in the development of better and more effective drugs. Now the initial diagnosis and treatment may be made in the hospital then the treatment can be carried on at home without hospitalization or transferring that still important convalescent period to the home. A bed is released and a new patient can be admitted.

To carry this modern concept of patient care a step further with the enlarged facilities in the three main sections of the out-patient department: Emergency, X-Ray and Laboratory, an increase in the volume of work is shown.

This represents a greater number of patients with insurance benefits from OMSIP and other similar medical insurances who need never enter the hospital as a bed patient. They can be completely diagnosed and treated in the out-patient department. Again this frees beds for a different type of illness.

Mention should be made of the new laundry facilities. This is done by regular weekly delivery, oftener is necessary, by the Regional Hospital Laundry in North Bay. This service includes replacement and maintenance of all linens as well. A comparison of costs shows:

1965	1967
\$1074.75 per month	\$956.00 per month
This includes:	Linen included
Laundry supplies	
Laundry wages	
Linen supplies	
Linen replacement	
Linen maintenance wages	
Electricity	

Keeping in mind the greater number of admissions per month in the new hospital, it can be seen this is a great saving.

Furniture and equipment maintenance is almost non-existent in the new hospital due to the generosity of the people of Mattawa and their donations to the new furnishings throughout the hospital. A substantial saving of building maintenance and building operational costs will be evident when the Town sewer system is extended to include the hospital. At the present time manual sewage disposal is an expensive item. It amounts to an average of \$1610.76 per month for the past eight months the new hospital has been in operation.

One must conclude the new hospital is catering to more people with better service and superior accommodation. Yet the cost has risen only in proportion to the general rise in the cost of living index for Ontario.

Report of 1967 Activities in The Mattawa General Hospital

Patients admitted 890
New born 47

Total of patient days spent in hospital 8123 days
Total of new born days spent in hospital 260 days

Average length of time spent in hospital
by each patient 9 days

Responsibility of payment for the 8123 days

Ontario Hospital Plan	7373 days
Federal Government	22 days
Workmen's Compensation Board	168 days
Residents of other provinces	102 days
Uninsured residents of Ontario	458 days

SPECIAL SERVICES

Emergency visits	In-patients	236	Total	2231 visits
	Out-patients	1995		
X-Ray films taken	In-patients	2447	Total	4256 films
	Out-patients	1809		
Operations performed	In-patients	155	Total	234 operations
	Out-patients	79		
Laboratory units	In-patients	17969	Total	20553 units
	Out-patients	3721		

Number of hours nursing care and special service care 48780
Total staff hours 85998

Number of meals served to patients 24369
Number of meals served to staff 14850 Total of 39219 meals

TOTAL EXPENSES FOR THE MATTAWA GENERAL HOSPITAL IN 1967:

\$297,962.00

Radiology	\$3,705	1.2
Laboratory	\$3,925	1.3
Central Supply	\$4,552	1.5
Pharmacy - drugs	\$16,781	5.6
Food	\$13,299	4.5
Laundry	\$11,473	3.9
Housekeeping	\$1,642	.6
Hospital Share of Employee benefits P.S.I. O.H.S.C. Canada Health Compensation	\$10,329	3.4
Salaries	\$168,321	56.4
Administration	\$7,324	2.5
Maintenance, new & old building	\$9,846	3.3
Depreciation on equipment	\$7,731	2.6
Other unallocated expenses	\$20,702	6.9
Insurance	\$2,080	.8
Fuel	\$9,838	3.3
Hydro	\$2,618	.9
Telephone	\$3,796	1.3

